

This bulletin includes;

- latest Claimant Count information
- total job posting numbers
- jobs by advertised salary
- job posting numbers by occupation

This update also includes a section on Gloucestershire's Gross Value Added (GVA), which provides a measure of the value of goods and services produced in the county and by each sector.



Jobs and Economic Bulletin

August 2022

Jute Blackmon
jute.blackmon@gfirstlep.com



AUGUST 2022

Please find the **August** update below, which includes the latest **Claimant Count** information, total **Job Posting** numbers, jobs by advertised salary and job posting numbers by occupation. This update also includes a section on **Gloucestershire's Gross Value Added (GVA)**, which provides a measure of the value of goods and services produced in the county and by each sector.

Executive summary

- In **August 2022**, the **Claimant Count** in Gloucestershire **increased** by **90** persons to **8,615** but the rate has **remained at 2.2%**
- **Job posting numbers** for the month of **August** were around **20,163** which is a monthly **decrease** of around **522** job postings when compared to the revised July figure of 20,685
- The total output of the Gloucestershire economy (GVA) was approximately £18.323 billion in 2020, representing 13% of the output of the South West region. The three largest sectors were **wholesale and retail trade; repair of motor vehicles** (14%), **manufacturing** (14%) and **real estate activities** (13%). These three sectors contributed a combined £7.68 billion to Gloucestershire's total GVA.

August Claimant Count

Note: the reference period for these Claimant Count figures is 11th August 2022.

This month saw the publication of the August ***Claimant Count** figures: the **Gloucestershire** rate **remained at 2.2%** (the value is expressed as a proportion of residents aged 16-64), but the overall number of claimants has gone up slightly. The August total now stands at **8,615** compared to the July figure of 8,525 which is a monthly **increase of 90 persons**. All districts saw an increase in the estimated number of unemployed claimants, except Stroud which saw a decrease.

For reference, prior to the pandemic in February 2020, the Gloucestershire rate was 2.0% with 7,895 people claiming, peaking in August 2020 to 5.0% and 19,155 people claiming.

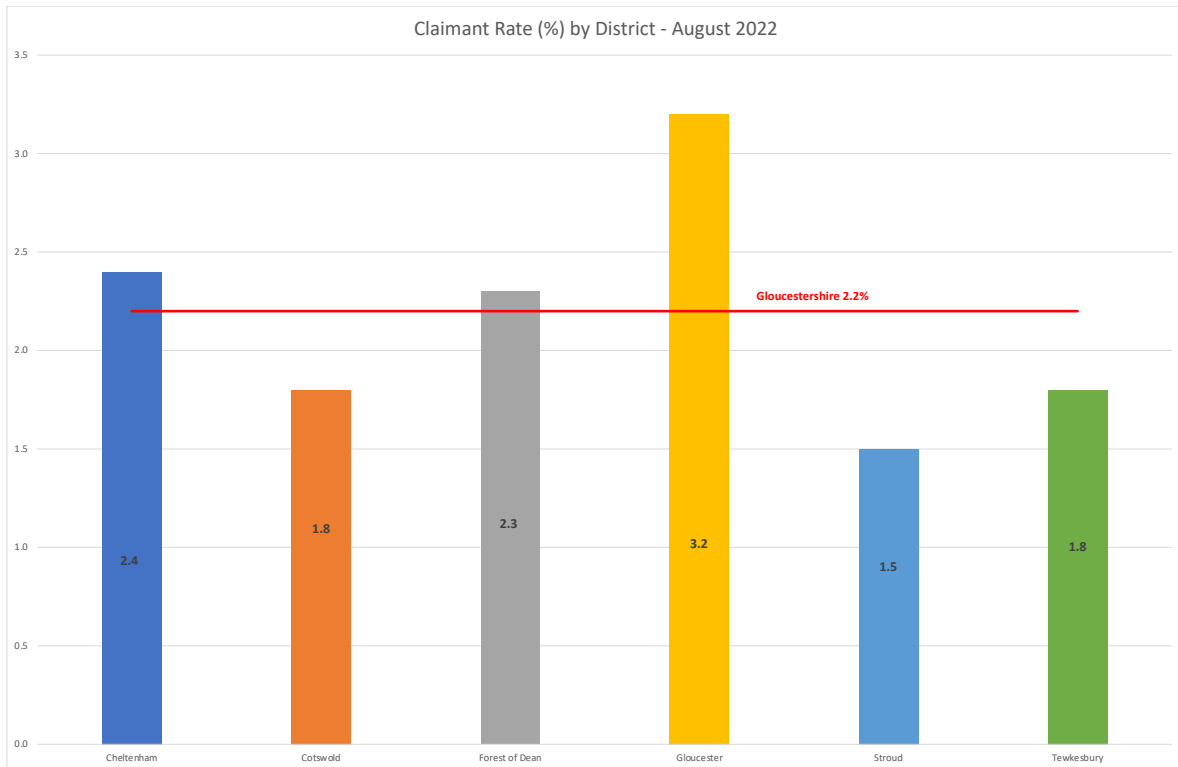
The August figure for the **South West** was **2.5%**, **England** was **3.8%** and the **UK** figure was **3.7%**.

For more information on the claimant count, please refer to the Gloucestershire County Council's monthly publications [here](#).

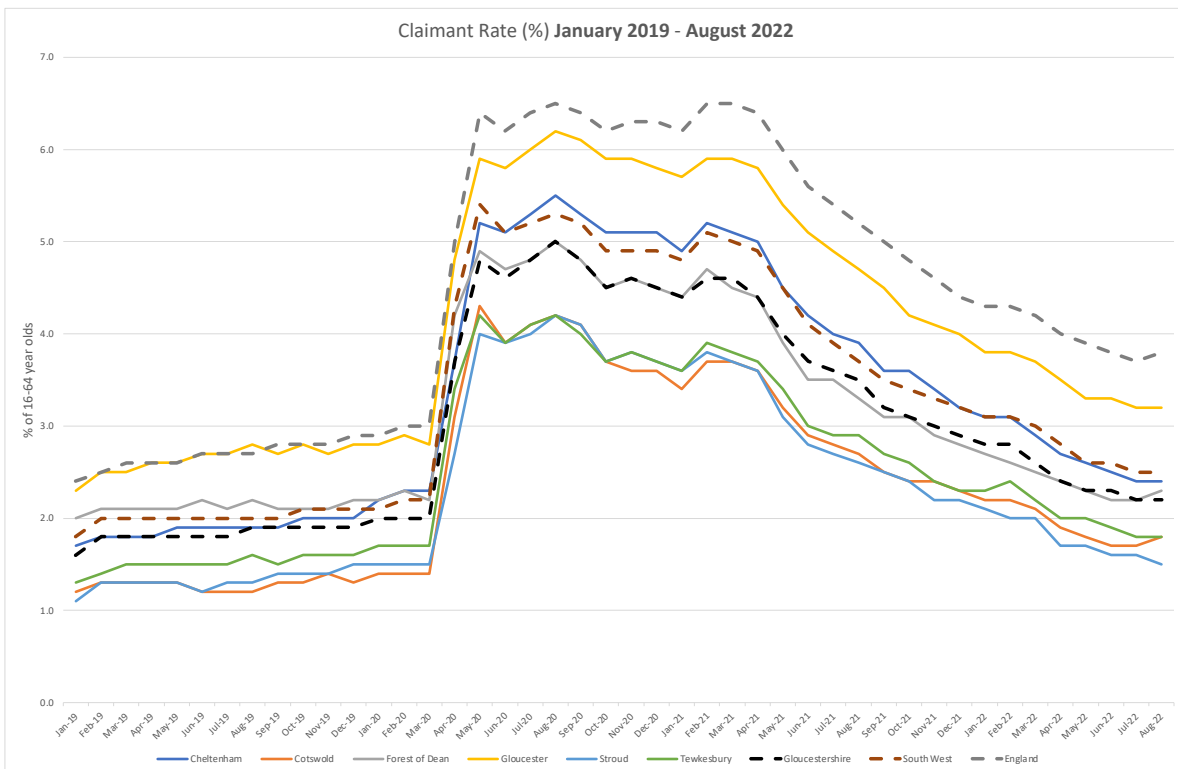
**The Claimant Count is a measure of the number of people who are unemployed and claiming benefits. For more information about Universal Credit please see the [ONS website](#).*



The below shows the claimant rate for August 2022 in Gloucestershire.



The below shows the current claimant rate for Gloucestershire at 2.2%, compared with all six districts, the South West and England from January 2019 to August 2022. The rate for Gloucestershire continues to be below that of England and the South West.

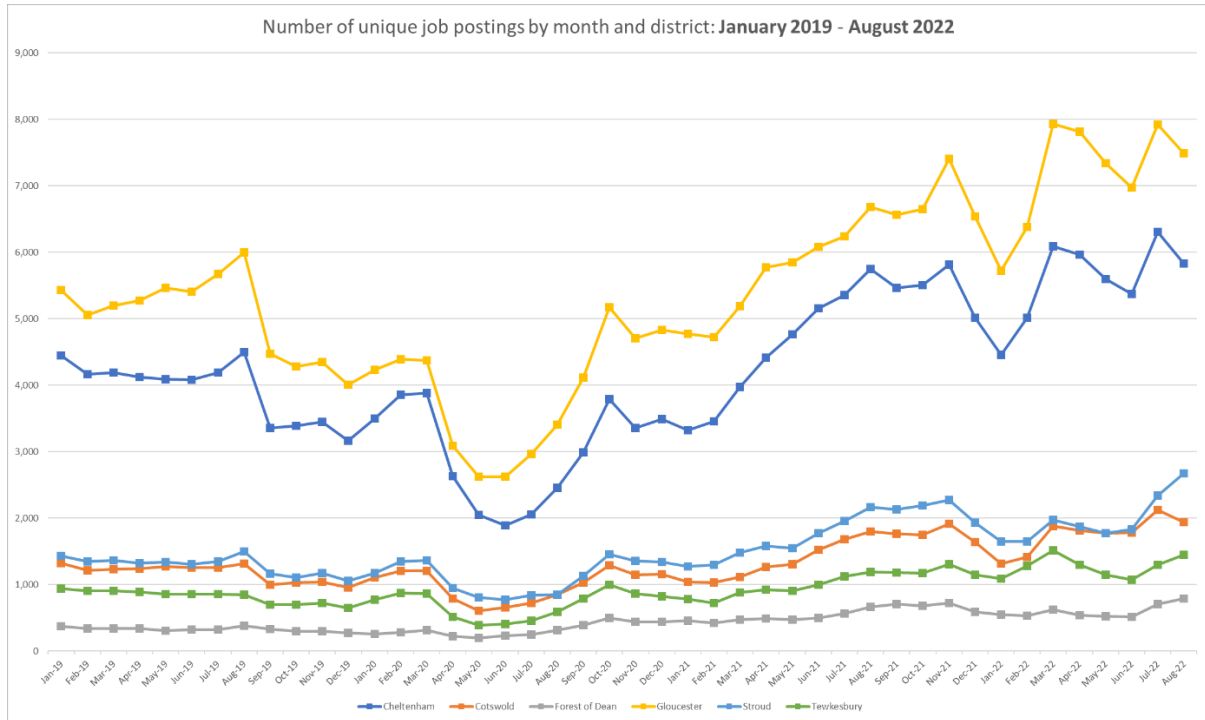




Job posting numbers

Job posting numbers for the month of **August 2022** were around **20,163** which is a monthly **decrease** of around **522** job postings, when compared to the revised July 2022 figure of 20,685.

The below shows total jobs posted by district from **January 2019 to August 2022**; three of Gloucestershire’s six districts have seen a small decrease in numbers when compared to July 2022, with Stroud, Tewkesbury and the Forest of Dean seeing an increase.



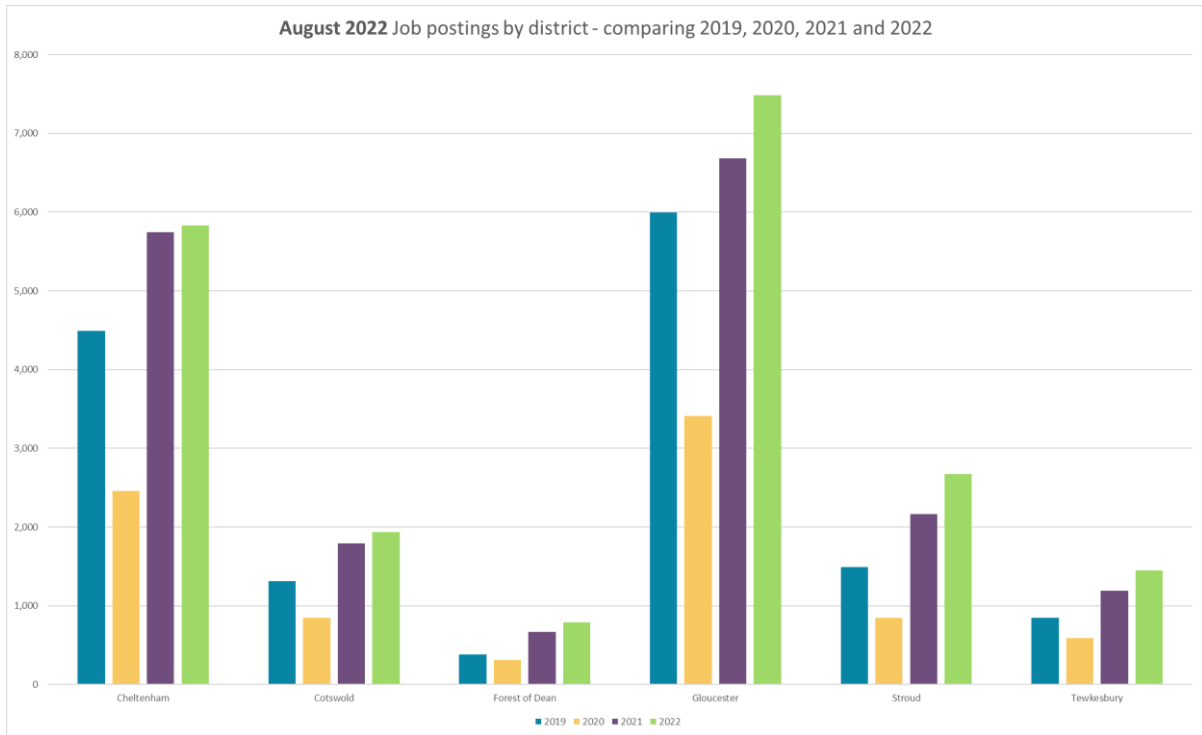
Source: Lightcast™. 2022

Please note – job posting numbers are based on snapshot data taken on the 6th September, numbers are provisional and subject to change. Job postings are collected from online sources, it doesn’t capture postings that are not advertised online, this might result in undercounting for some occupations. This data shows any active posting rather than newly listed postings. A posting is removed from the count after it has been online for 61 days. A job posting does not necessarily result in a job and some jobs will be created without a job posting.



Job posting numbers – district comparison

The below gives a district overview of total job postings for the month of August, comparing the same month in 2019, 2020, 2021 and 2022. Job posting numbers in August 2022 are higher than August in previous years, with the biggest increase seen in Gloucester.



Source: Lightcast™. 2022

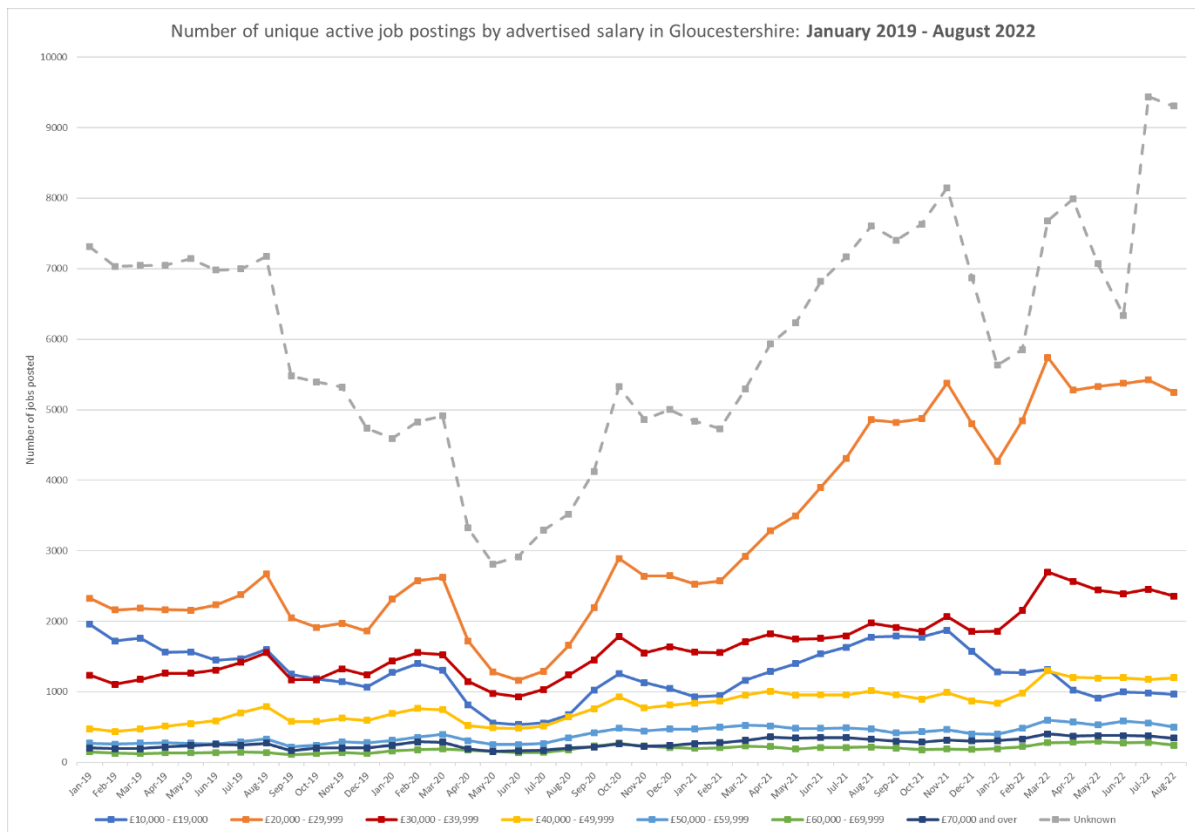


Jobs by advertised salary

The below graph looks at job postings by advertised salary between January 2019 and August 2022. Please note that a significant proportion of postings don't show a salary, which are indicated by the grey line marked as 'unknown'.

The graph shows that all salary bands saw a dip in the number of advertised postings during the pandemic, with a notable dip between March 2020 before picking up again from August 2020 and dropping off again in November 2020. There has been a notable increase in the number of jobs posted in the £20-29k (orange line) salary range as well as those with salaries between £30-39k (red line), with other salaries seeing an increase but to a lesser extent.

The August update has seen a small drop across all salary bands when compared to July, except for the £40-49k (yellow line) band which has seen a small increase. Those marked as 'unknown' (grey dashed line) that do not show a salary have seen a drop in numbers in August, having seen a notable rise in July.



Source: Lightcast™. 2022



Occupations

The table below shows changes in the number of postings by broad occupation, comparing pre-pandemic February 2020 numbers with August 2021 and August 2022.

The trend displayed (chart on the right) is for the 3-year period January 2019 to August 2022. Cells highlighted green show the occupations that have seen an increase when compared to pre-pandemic February 2020.

All occupations saw an increase in August 2022 compared with pre-pandemic February 2020 numbers. The green bars in the trend chart show the peak in postings for that occupation and red bars highlighting the lowest number of postings for the period January 2019 to August 2022. The trend shows that two of the nine occupations have peaked in August 2022, with the remaining having peaked in July or March 2022

Some of the biggest increases when comparing February 2020 and August 2022 can be seen in the **Elementary Occupations** – examples of some occupations that fall under this category are **agricultural, construction, process plant occupations, goods storage, administration, personal services, cleaning, security, and sales occupations.**

Vancancies by broad occupation	Feb 2020 Unique Postings	Aug 2021 Unique Postings	August 2022 Unique Postings	% change Feb 2020 - Aug 2022	Trend between January 2019 - August 2022
Managers, Directors and Senior Officials	892	1,339	1,477	66%	
Professional Occupations	3,368	4,377	4,647	38%	
Associate Professional and Technical Occupations	2,065	3,004	3,416	65%	
Administrative and Secretarial Occupations	1,115	2,045	2,086	87%	
Skilled Trades Occupations	1,030	1,480	1,446	40%	
Caring, Leisure and Other Service Occupations	994	1,594	2,020	103%	
Sales and Customer Service Occupations	1,120	1,844	1,982	77%	
Process, Plant and Machine Operatives	582	917	1,120	92%	
Elementary Occupations	718	1,448	1,903	165%	
Total Across All Occupations	11,949	18,243	20,163	69%	

Source: Lightcast™. 2022

Occupation data can be viewed at a high level (as shown in the above table), which uses broad category one-digit Standard Occupation Classification (SOC) codes to group similar jobs together, or at a granular level, using four-digit Standard Occupation Classification (SOC) codes. These four-digit Standard Occupation Classification (SOC) codes provide more detailed descriptions and have been used in the table below.

The below lists the **top ten occupations by four-digit SOC code for August 2022**, alongside total jobs advertised and what proportion this was as a percentage of the total jobs posted in Gloucestershire for this month. Care Workers and Home Carers accounted for 5% of the overall jobs posted in Gloucestershire in August, followed by Customer Service Occupations 3.5% and Other Administrative Occupations 3.4%, with the remaining occupations accounting for smaller numbers.



Top ten Occupations by four-digit SOC code	Aug 2022 Unique Postings	As a percentage of jobs posted
Care Workers and Home Carers	1,001	5.0%
Customer Service Occupations n.e.c.	710	3.5%
Other Administrative Occupations n.e.c.	689	3.4%
Sales Related Occupations n.e.c.	638	3.2%
Nurses	609	3.0%
Programmers and Software Development Professionals	605	3.0%
Kitchen and Catering Assistants	508	2.5%
Elementary Storage Occupations	382	1.9%
Chefs	354	1.8%
IT Business Analysts, Architects and Systems Designers	295	1.5%

Source: Lightcast™. 2022

Top companies posting

The top ten companies posting jobs in Gloucestershire in August 2022 were:

- NHS
- Ultra Group Company Limited
- Gloucestershire County Council
- Tesco
- General Electric
- Gloucestershire College
- SJP Group
- Safran
- BUPA
- Whitbread

Source: Lightcast™. 2022

Please note this does not include employment agencies, however employment agencies do form part of the total jobs posted in the report.

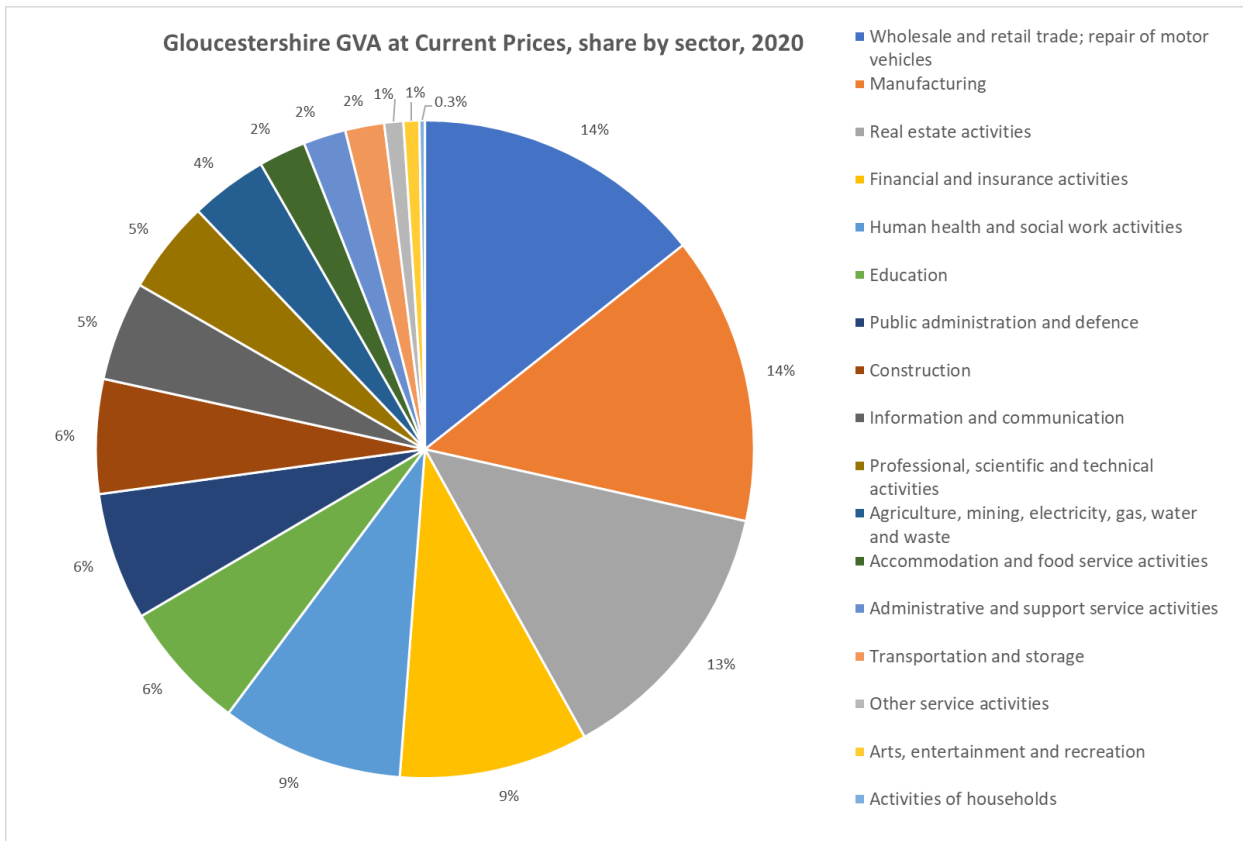


Gloucestershire's GVA

Gross Value Added (GVA) is the measure of the value of goods and services produced in an area, industry or sector, which can be used to measure the value of the economy through economic output.

Data at a local level is published annually with a considerable time lag, the latest figures show that in 2020, Gloucestershire's GVA was approximately £18.323 billion, which represented 13% of the output of the South West region.

The chart below shows the share that each sector contributed to the county's GVA in 2020. The three largest sectors were **wholesale and retail trade; repair of motor vehicles** (14%), **manufacturing** (14%) and **real estate activities** (13%). These three sectors contributed a combined £7.68 billion to Gloucestershire's total GVA.



Please note that GVA figures are provisional and are subject to revisions in later releases.



The chart below shows GVA by sector at district level. **Cotswold** had the highest GVA, with a significant contribution from the financial and insurance activities sector. **Gloucester** and **Cheltenham** follow, with large contributions from the public administration and defence sector but also the administrative and support service activities sector. **Tewkesbury** and **Stroud's** output is driven by manufacturing, while **Forest of Dean's** dominant sector is retail, making up approximately half of its GVA.

