

This bulletin includes the latest Claimant Count information, total job posting numbers and job posting numbers by occupation.



Jobs and Economic Bulletin

December 2022

Jute Blackmon
jute.blackmon@gfirstlep.com



December 2022

Please find the **December** update below, which includes the latest **Claimant Count** information, total **Job Posting** numbers and job posting numbers by **occupation**.

Executive summary

- The **Claimant Count** in Gloucestershire **increased** by **200 persons** to **8,740** and the rate was **2.3%**
- **Job posting numbers** for the month of **December** were around **20,893** which is a monthly **decrease** of around **56** job postings when compared to the revised November figure of 20,949

December Claimant Count

Note: the reference period for these Claimant Count figures is 8th December 2022.

This month saw the publication of the December ***Claimant Count** figures: the **Gloucestershire** rate has seen an **increase** to **2.3%** (the value is expressed as a proportion of residents aged 16-64). The December total now stands at **8,740** compared to the November figure of 8,540 which is a monthly **increase of 200 persons**. All districts saw an increase in the estimated number of unemployed claimants, except Cotswold and Forest of Dean which saw a decrease.

The December figure for the **South West** was **2.5%**, **England** was **3.8%** and the **UK** figure was **3.7%**.

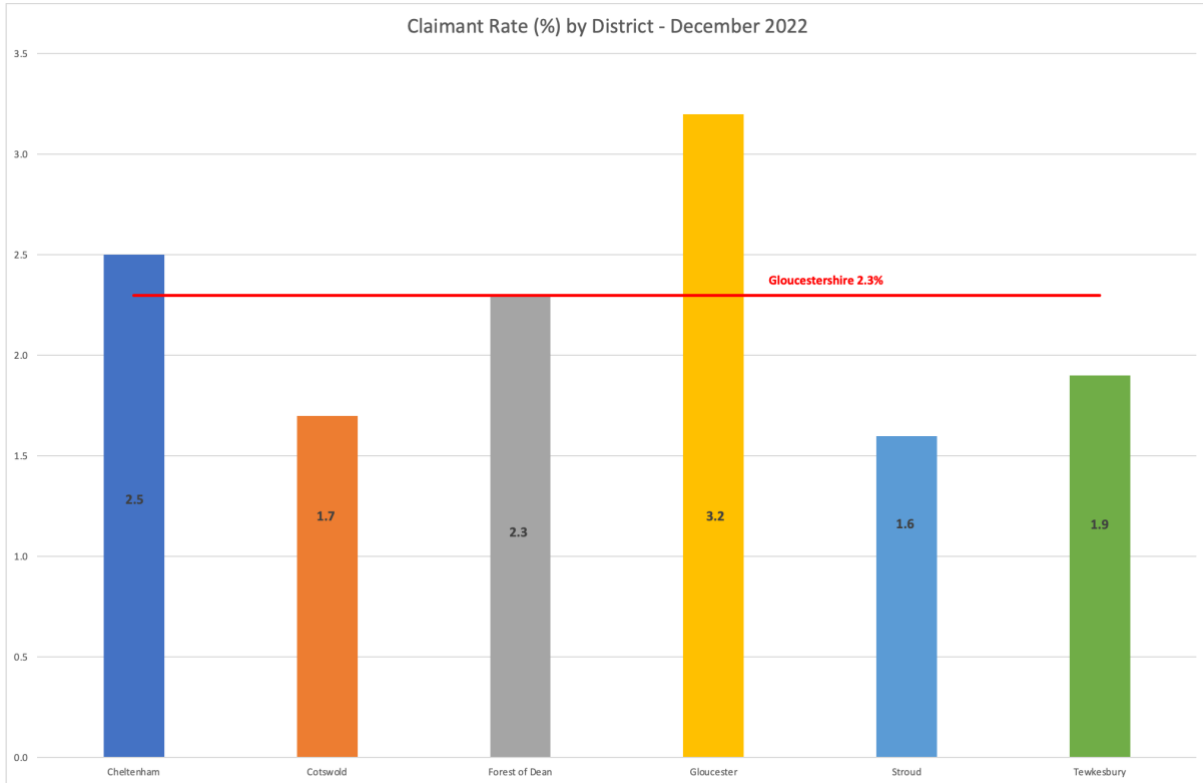
For reference, prior to the pandemic in February 2020, the Gloucestershire rate was 2.0% with 7,895 people claiming, peaking in August 2020 to 5.0% and 19,155 people claiming.

For more information on the claimant count, please refer to the Gloucestershire County Council's monthly publications [here](#).

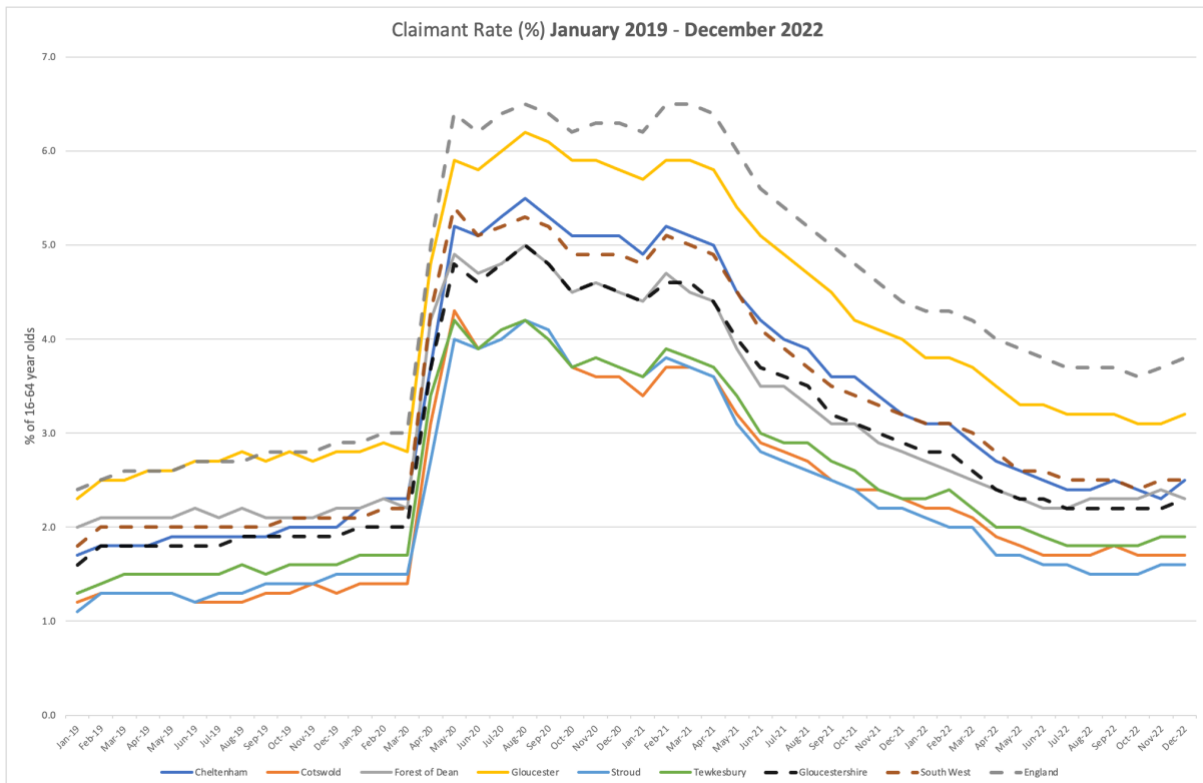
**The Claimant Count is a measure of the number of people who are unemployed and claiming benefits. For more information about Universal Credit please see the [ONS website](#).*



The below shows the claimant rate for December 2022 in Gloucestershire.



The below shows the current claimant rate for Gloucestershire at 2.3%, compared with all six districts, the South West and England from January 2019 to December 2022. The rate for Gloucestershire continues to be below that of England and the South West.

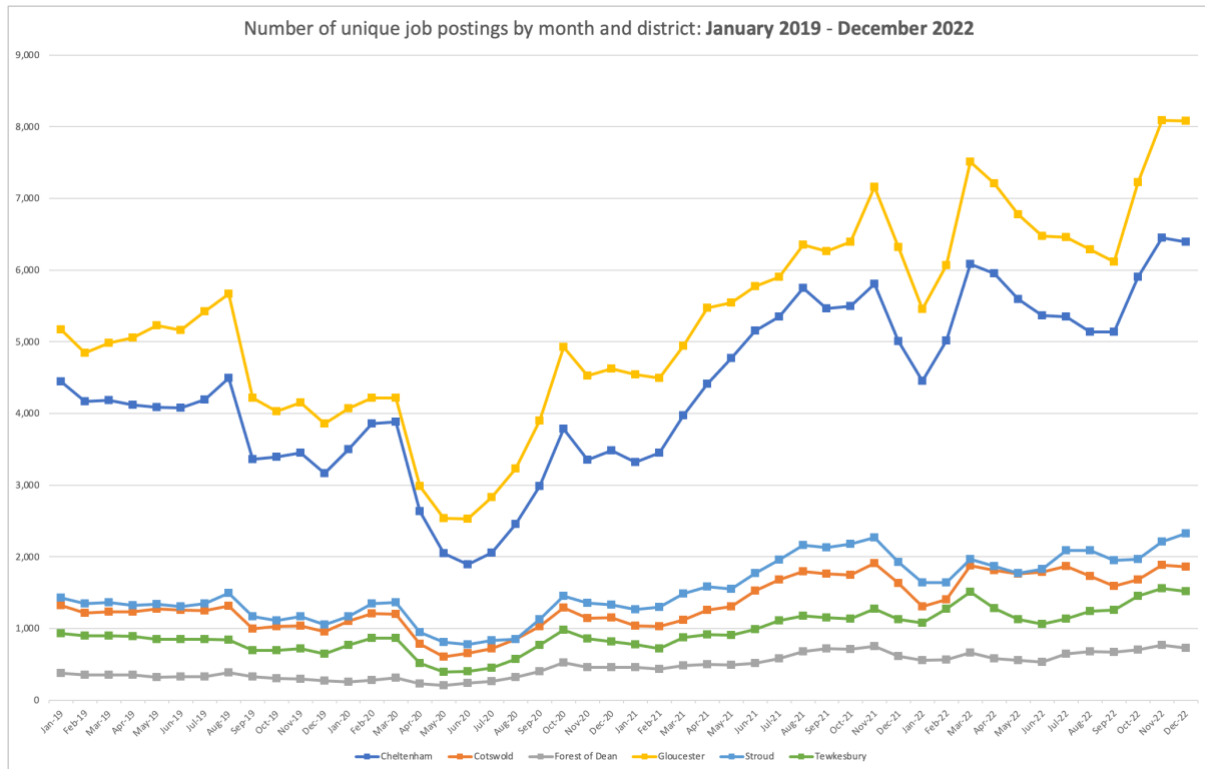




Job posting numbers

Job posting numbers for the month of **December 2022** were around **20,893** which is a monthly **decrease** of around **56** job postings, when compared to the revised November 2022 figure of 20,949.

The below shows total jobs posted by district from **January 2019 to December 2022**. Most districts have seen a small decrease in numbers when compared to November 2022, except for Stroud which saw an increase.

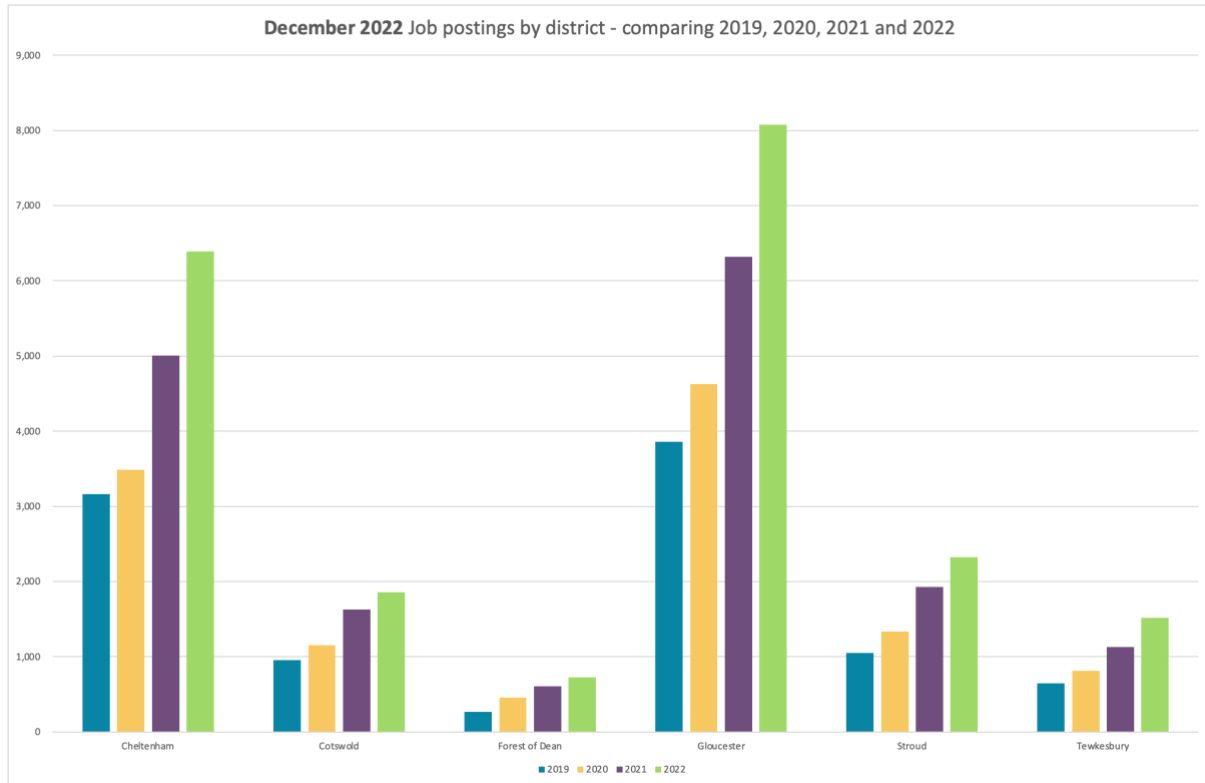


Source: Lightcast™. 2023



Job posting numbers – district comparison

The below gives a district overview of total job postings for the month of December 2022, comparing the same month in 2019, 2020 and 2021. Job posting numbers in December 2022 (green bar) are higher than December in previous years, with the biggest increase seen in Gloucester.



Source: Lightcast™. 2023

Please note – job posting numbers are based on snapshot data taken on the 25th January, numbers are provisional and subject to change. Job postings are collected from online sources, it doesn't capture postings that are not advertised online, this might result in undercounting for some occupations. This data shows any active posting rather than newly listed postings. A posting is removed from the count after it has been online for 61 days. A job posting does not necessarily result in a job and some jobs will be created without a job posting.



Occupations

The table below shows changes in the number of postings by broad occupation, comparing pre-pandemic February 2020 numbers with December 2021 and December 2022.

The trend displayed (chart on the right) is for the 3-year period January 2019 to December 2022. Cells highlighted green show the occupations that have seen an increase when compared to pre-pandemic February 2020.

All occupations saw an increase in December 2022 compared with pre-pandemic February 2020 numbers. The green bars in the trend chart show the peak in postings for that occupation and red bars highlighting the lowest number of postings for the period January 2019 to December 2022.

The trend shows that three occupations peaked in December 2022, these were: **Administrative and Secretarial Occupations Professional Occupations, Caring, Leisure and Other Service Occupations** and **Elementary Occupations**. Five other occupations can be seen to have peaked in November 2022, with the remaining two occupations peaking in March 2022.

Some of the biggest increases when comparing February 2020 and December 2022 can be seen in the **Elementary Occupations** – examples of some occupations that fall under this category are **agricultural, construction, process plant occupations, goods storage, administration, personal services, cleaning, security, and sales occupations**.

Vancancies by broad occupation	Feb 2020 Unique Postings	Dec 2021 Unique Postings	Dec 2022 Unique Postings	% change Feb 2020 - Dec 2022	Trend between January 2019 - December 2022
Managers, Directors and Senior Officials	878	1,139	1,358	55%	
Professional Occupations	3,322	4,121	4,759	43%	
Associate Professional and Technical Occupations	2,046	2,698	3,382	65%	
Administrative and Secretarial Occupations	1,101	1,780	2,137	94%	
Skilled Trades Occupations	1,024	1,194	1,515	48%	
Caring, Leisure and Other Service Occupations	992	1,706	2,386	141%	
Sales and Customer Service Occupations	1,108	1,573	1,911	72%	
Process, Plant and Machine Operatives	580	808	1,066	84%	
Elementary Occupations	716	1,585	2,373	231%	
Total Across All Occupations	11,770	16,621	20,893	78%	

Source: Lightcast™. 2023

Occupation data can be viewed at a high level (as shown in the above table), which uses broad category one-digit Standard Occupation Classification (SOC) codes to group similar jobs together, or at a granular level, using four-digit Standard Occupation Classification (SOC) codes. These four-digit Standard Occupation Classification (SOC) codes provide more detailed descriptions and have been used in the table below.

The below lists the **top ten occupations by four-digit SOC code for December 2022**, alongside total jobs advertised and what proportion this was as a percentage of the total jobs posted in Gloucestershire for this month. **Care Workers and Home Carers** accounted for **5.5%** of the overall jobs posted in Gloucestershire in December 2022, followed by **Other Administrative Occupations n.e.c. 3.8%** and **Sales Related Occupations n.e.c. 3.0%**, with the remaining occupations accounting for smaller numbers.



Top ten Occupations by four-digit SOC code	Dec 2022 Unique Postings	As a percentage of jobs posted
Care Workers and Home Carers	1,148	5.5%
Other Administrative Occupations n.e.c.	789	3.8%
Sales Related Occupations n.e.c.	618	3.0%
Programmers and Software Development Professionals	584	2.8%
Nurses	561	2.7%
Customer Service Occupations n.e.c.	554	2.7%
Kitchen and Catering Assistants	502	2.4%
Elementary Storage Occupations	457	2.2%
Cleaners and Domestic	388	1.9%
Chefs	327	1.6%

Source: Lightcast™. 2023

Please note: **n.e.c.** stands for **not elsewhere classified** – for a classification that cannot fit into any other grouping

Top companies posting

The top ten companies posting jobs in Gloucestershire in December 2022 were:

- NHS
- Gloucestershire County Council
- General Electric
- Ultra Group Company Limited
- Northrop Grumman
- Amazon
- Safran
- Gloucestershire College
- Barchester Plc
- GCHQ Holdings

Please note this does not include employment agencies, however employment agencies do form part of the total jobs posted in the report.