

This bulletin includes;

- latest Claimant Count information
- total job posting numbers
- job posting numbers by occupation

This update also includes a section on employment by industry from the 2021 Census, providing an insight of the employment status of individuals aged 16 years and over who were working during the period between 15th March and 21st March.



Jobs and Economic Bulletin

February 2023

Jute Blackmon
jute.blackmon@gfirstlep.com



February 2023

Please find the **February** update below, which includes the latest **Claimant Count** information, total **Job Posting** numbers and job posting numbers by **occupation**. This update also includes a section on employment by industry from the 2021 Census, providing an insight of the employment status of individuals aged 16 years and over who were working during the period between 15th March and 21st March 2021.

Executive summary

- The **Claimant Count** in Gloucestershire **increased** by **205 persons** to **8,850** and the rate was **2.3%**
- **Job posting numbers** for the month of **February** were around **22,097** which is a monthly **decrease** of around **2,937** job postings when compared to the revised January figure of 25,034.
- Figures from the **2021 Census** show that In Gloucestershire, the wholesale and retail trade employed the largest number of people in Gloucestershire (45,581 people or 14.5% of people in employment), this was closely followed by human health and social work activities (14.1%). This was the picture also reflected at a national level, with wholesale and retail trade accounting for 15% of people in employment, and human health and social work activities 14.7%
- Figures from the **2021 Census** also reveal that the manufacturing sector has seen the largest percentage point decreases in employment between 2011 and 2021, while the human health and social work activities sector saw the largest growth in employment.

February Claimant Count

Note: the reference period for these Claimant Count figures is 9th February 2023.

This month saw the publication of the February ***Claimant Count** figures: the **Gloucestershire** rate has **increased** to **2.3%** (the value is expressed as a proportion of residents aged 16-64). The February total now stands at **8,850** compared to the January figure of 8,645 which is a monthly **increase of 205 persons**. All districts saw an increase in the estimated number of unemployed claimants, except Cotswold which saw a decrease.

The February figure for the **South West** was **2.5%**, **England** was **3.7%** and the **UK** figure was **3.7%**.

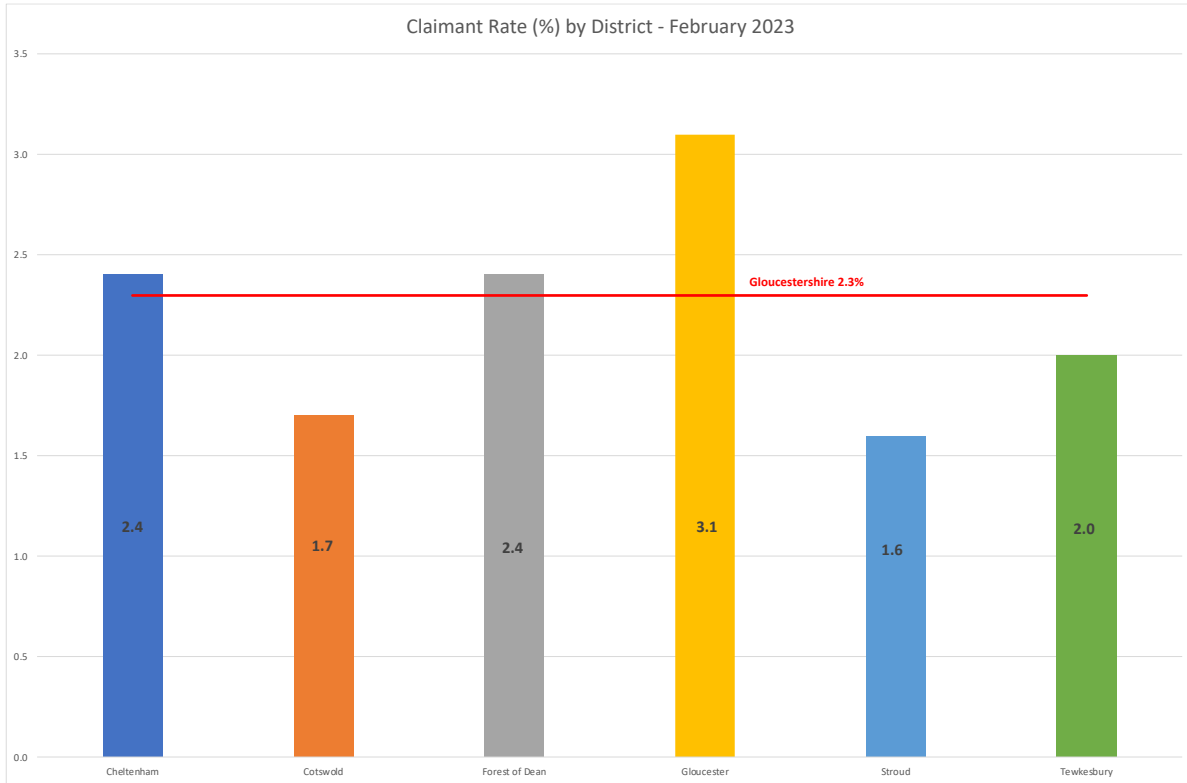
For reference, prior to the pandemic in February 2020, the Gloucestershire rate was 2.0% with 7,895 people claiming, peaking in August 2020 to 5.0% and 19,155 people claiming.

For more information on the claimant count, please refer to the Gloucestershire County Council's monthly publications [here](#).

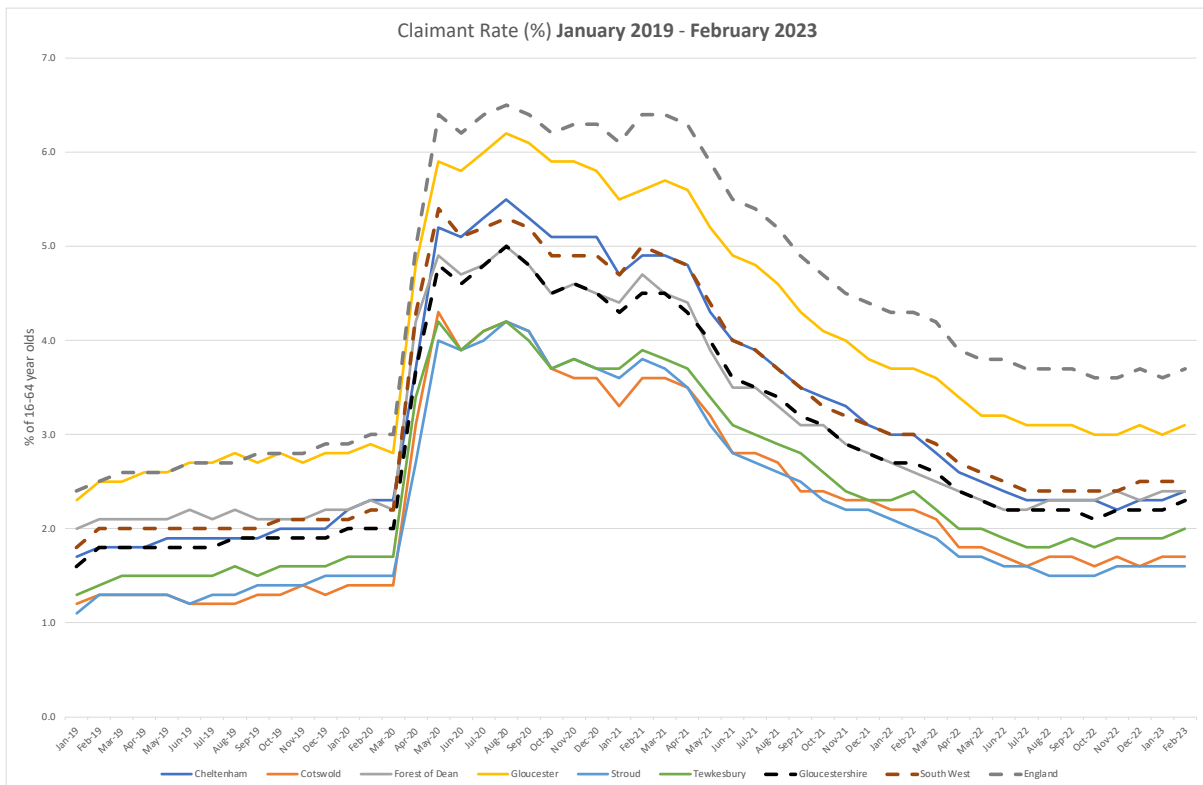
**The Claimant Count is a measure of the number of people who are unemployed and claiming benefits. For more information about Universal Credit please see the [ONS website](#).*



The below shows the claimant rate for February 2023 in Gloucestershire.



The below shows the current claimant rate for Gloucestershire at 2.3%, compared with all six districts, the South West and England from January 2019 to February 2023. The rate for Gloucestershire continues to be below that of England and the South West.

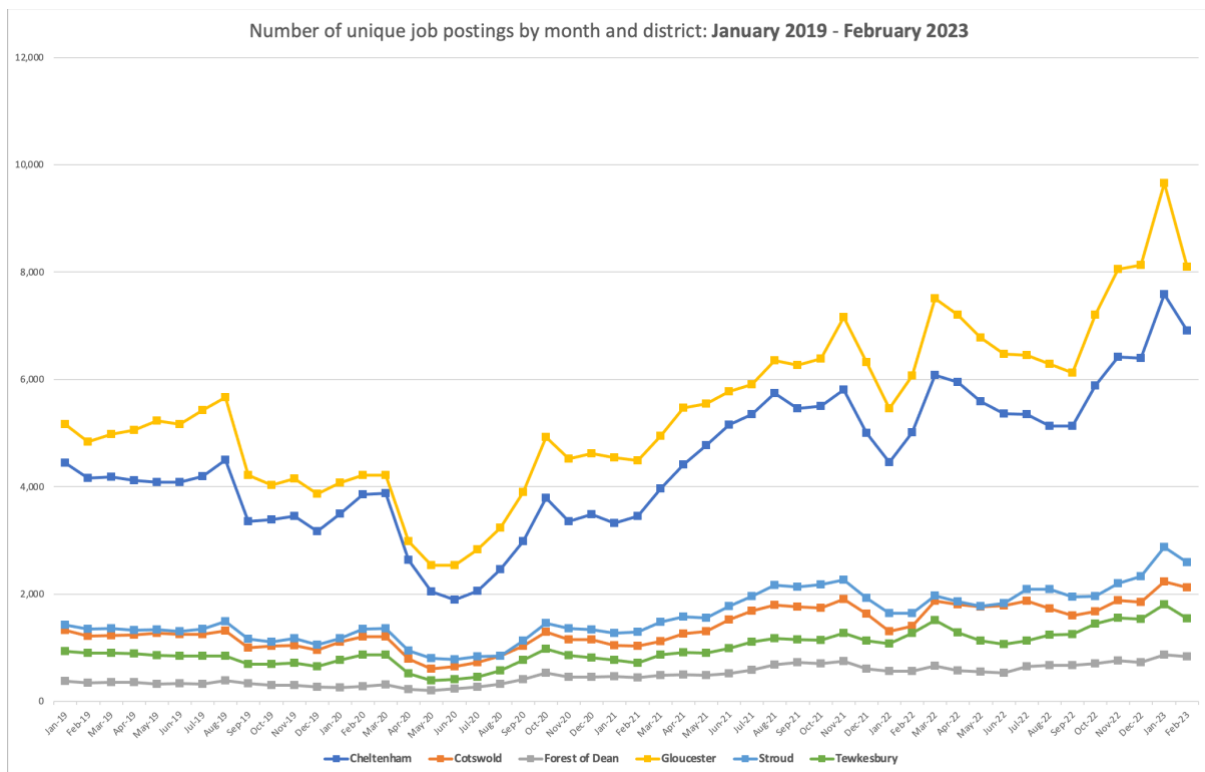




Job posting numbers

Job posting numbers for the month of **February 2023** were around **22,097** which is a monthly **decrease** of around **2,937** job postings, when compared to the revised January 2023 figure of 25,034.

The below shows total jobs posted by district from **January 2019 to February 2023**. All districts have seen a decrease in numbers when compared to January 2023.

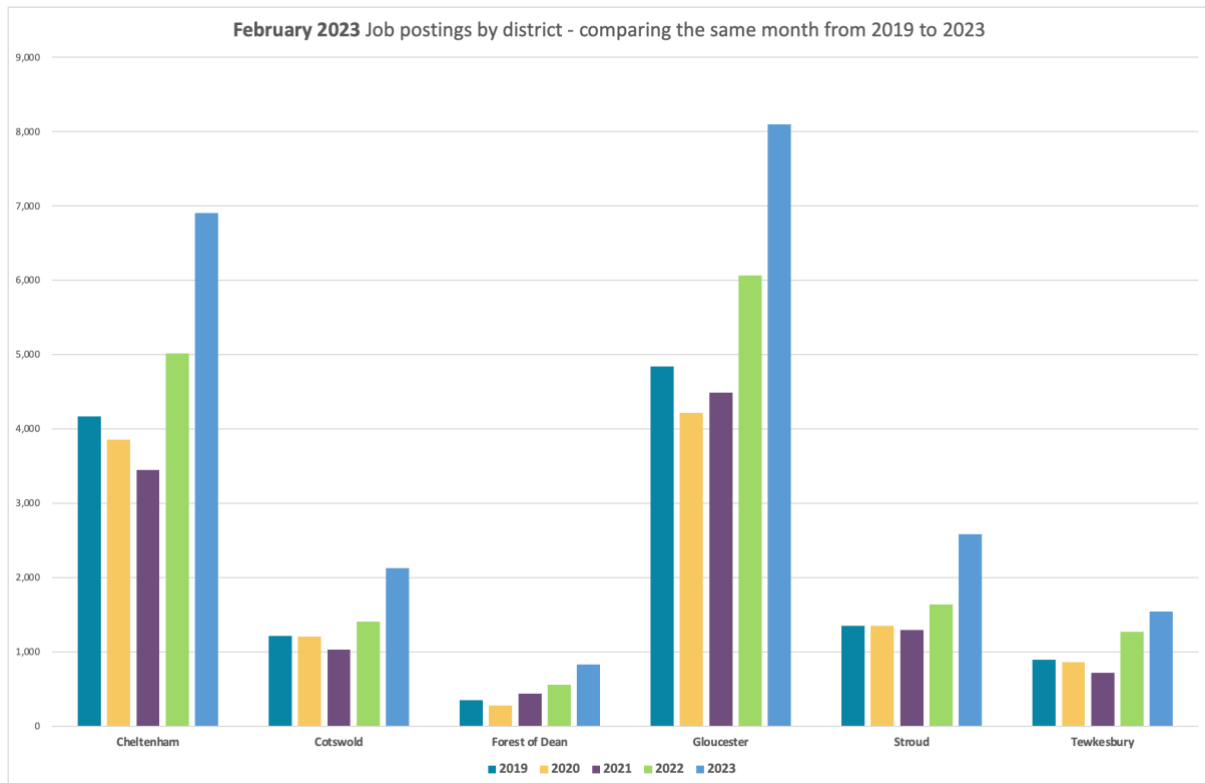


Source: Lightcast™. 2023



Job posting numbers – district comparison

The below gives a district overview of total job postings for the month of February 2023, comparing the same month in 2019, 2020, 2021 and 2022. Job posting numbers in February 2023 (light blue bar) are higher than February in previous years, with the biggest increase seen in Cheltenham and Gloucester.



Source: Lightcast™. 2023

Please note – job posting numbers are based on snapshot data taken on the 14th March, numbers are provisional and subject to change. Job postings are collected from online sources, it doesn't capture postings that are not advertised online, this might result in undercounting for some occupations. This data shows any active posting rather than newly listed postings. A posting is removed from the count after it has been online for 61 days. A job posting does not necessarily result in a job and some jobs will be created without a job posting.



Occupations

The table below shows changes in the number of postings by broad occupation, comparing pre-pandemic February 2020 numbers with February 2021, February 2022, and February 2023.

The trend displayed (chart on the right) is for the 4-year period January 2019 to February 2023. Cells highlighted green show the occupations that have seen an increase when compared to pre-pandemic February 2020.

All occupations saw an increase in February 2023 compared with pre-pandemic February 2020 numbers. The green bars in the trend chart show the peak in postings for that occupation and red bars highlighting the lowest number of postings for the period January 2019 to February 2023.

The trend shows that all occupations peaked in January 2023 and then decreasing in February 2023, which reflects the decrease in job posting numbers overall.

Some of the biggest increases since February 2020 can be seen in the **Elementary Occupations** – examples of some occupations that fall under this category are **agricultural, construction, process plant occupations, goods storage, administration, personal services, cleaning, security, and sales occupations.**

Vacancies by broad occupation	Feb 2020 Unique Postings	Feb 2021 Unique Postings	Feb 2022 Unique Postings	Feb 2023 Unique Postings	% change Feb 2020 - Feb 2023	Trend between January 2019 - February 2023
Managers, Directors and Senior Officials	874	872	1,179	1,489	70%	
Professional Occupations	3,314	3,637	4,083	5,132	55%	
Associate Professional and Technical Occupations	2,039	2,060	2,710	3,497	72%	
Administrative and Secretarial Occupations	1,100	1,104	1,542	2,428	121%	
Skilled Trades Occupations	1,014	789	1,247	1,648	63%	
Caring, Leisure and Other Service Occupations	984	981	1,614	2,378	142%	
Sales and Customer Service Occupations	1,105	783	1,298	2,071	87%	
Process, Plant and Machine Operatives	571	498	826	1,130	98%	
Elementary Occupations	708	616	1,413	2,258	219%	
Total Across All Occupations	11,770	11,417	15,961	22,097	88%	

Source: Lightcast™. 2023

Occupation data can be viewed at a high level (as shown in the above table), which uses broad category one-digit Standard Occupation Classification (SOC) codes to group similar jobs together, or at a granular level, using four-digit Standard Occupation Classification (SOC) codes. These four-digit Standard Occupation Classification (SOC) codes provide more detailed descriptions and have been used in the table below.

The below lists the **top ten occupations by four-digit SOC code for February 2023**, alongside total jobs advertised and what proportion this was as a percentage of the total jobs posted in Gloucestershire for this month. **Care Workers and Home Carers** accounted for **4.9%** of the overall jobs posted in Gloucestershire in February 2023, followed by **Other Administrative Occupations n.e.c. 3.9%** and **Sales Related Occupations n.e.c. 3.1%**, with the remaining occupations accounting for smaller numbers.



Top ten Occupations by four-digit SOC code	Feb 2023 Unique Postings	As a percentage of jobs posted
Care Workers and Home Carers	1,084	4.9%
Other Administrative Occupations n.e.c.	864	3.9%
Sales Related Occupations n.e.c.	694	3.1%
Customer Service Occupations n.e.c.	631	2.9%
Programmers and Software Development Professionals	624	2.8%
Nurses	587	2.7%
Kitchen and Catering Assistants	458	2.1%
Cleaners and Domestic	390	1.8%
Elementary Storage Occupations	356	1.6%
Nursing Auxiliaries and Assistants	322	1.5%

Source: Lightcast™. 2023

Please note: **n.e.c.** stands for **not elsewhere classified** – for a classification that cannot fit into any other grouping

Top companies posting

The top ten companies posting jobs in Gloucestershire in February 2023 were:

- NHS
- General Electric
- Ultra Group Company Limited
- Gloucestershire County Council
- Northrop Grumman
- Safran
- Tesco
- Amazon
- University of Gloucestershire
- Barchester Plc

Please note this does not include employment agencies, however employment agencies do form part of the total jobs posted in the report.



Employment by industry – from the 2021 Census

Below is a comprehensive overview of employment by industry in Gloucestershire and its districts, as well as England and Wales, based on the 2021 Census. The data provides insight into the employment status of individuals aged 16 years and over who were working during the period between 15th March and 21st March 2021, categorised by broad industry groups that represents their current industry or business. The employment by industry data from the 2021 Census shown below is based on where people live, rather than where they work.

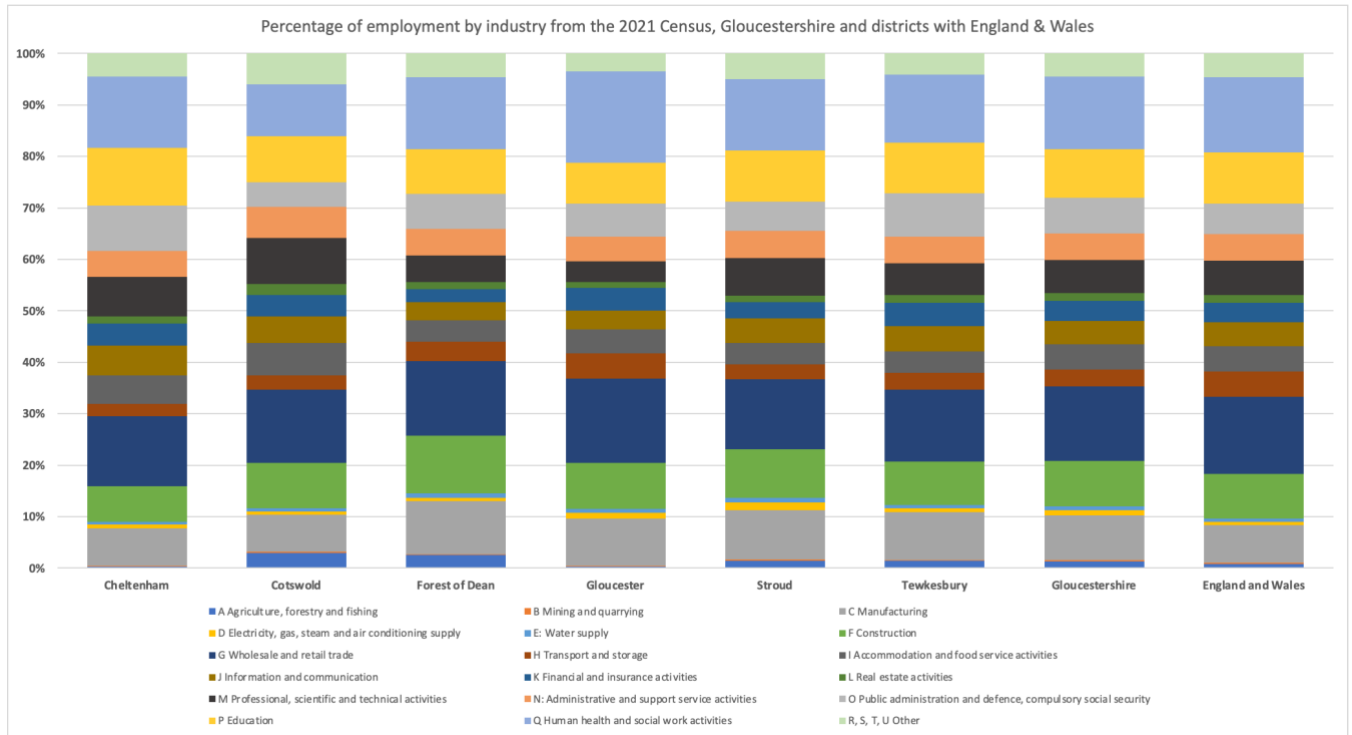
More information on the 2021 Census labour market and travel to work theme can be found on the Gloucestershire County Council website [here](#). Further analysis on the 2021 Census topics can also be found on the Gloucestershire County Council website [here](#).

In 2021 the wholesale and retail trade employed the largest number of people in Gloucestershire (45,581 people or 14.5% of people in employment), this was closely followed by human health and social work activities (14.1%). As shown in the graph below, this was the picture also reflected at a national level with wholesale and retail trade accounting for 15% of people in employment, and human health and social work activities 14.7%

- **Cheltenham** has an over-representation of employment in the public administration and defence sector (8.8% of employment in Cheltenham and 5.9% of employment in England and Wales. Conversely it has an under-representation of employment in the wholesale and retail trade (13.6% compared to 15.0% nationally).
- **Cotswold** has an over-representation of employment in agriculture, forestry and fishing (3.0% of employment in Cotswold and 0.9% in England and Wales) and professional, scientific and technical activities (8.9% compared to 6.6% nationally). Conversely it has an under-representation of employment in human health and social work activities (10.1% compared to 14.7% nationally).
- The **Forest of Dean** has an over-representation of employment in agriculture, forestry and fishing (2.6% of employment in Forest of Dean and 0.9% in England and Wales) and construction (11.1% compared to 8.7% nationally). Conversely it has an under-representation of employment in professional, scientific and technical activities (5.2% compared to 6.6% nationally).
- **Gloucester** has an over-representation of employment in human health and social work activities (17.8% of employment in Gloucester and 14.6% in England and Wales) and wholesale and retail trade (16.4% compared to 15.0% nationally). Conversely it has an under-representation of employment in professional, scientific and technical activities (4.0% compared to 6.6% nationally) and education (8.0% of employment in Gloucester compared to 9.8% nationally).
- **Stroud** has an over-representation of employment in manufacturing (9.5% of employment in Stroud and 7.3% in England and Wales). Conversely it has an under-representation of employment in wholesale and retail trade (13.7% compared to 15.0% nationally).



- Tewkesbury** has an over-representation of employment in public and administration and defence activities (8.5% of employment in Tewkesbury and 5.9% in England and Wales). Conversely it has an under-representation of employment in human health and social work activities (13.2% of employment in Tewkesbury compared to 14.2% nationally).



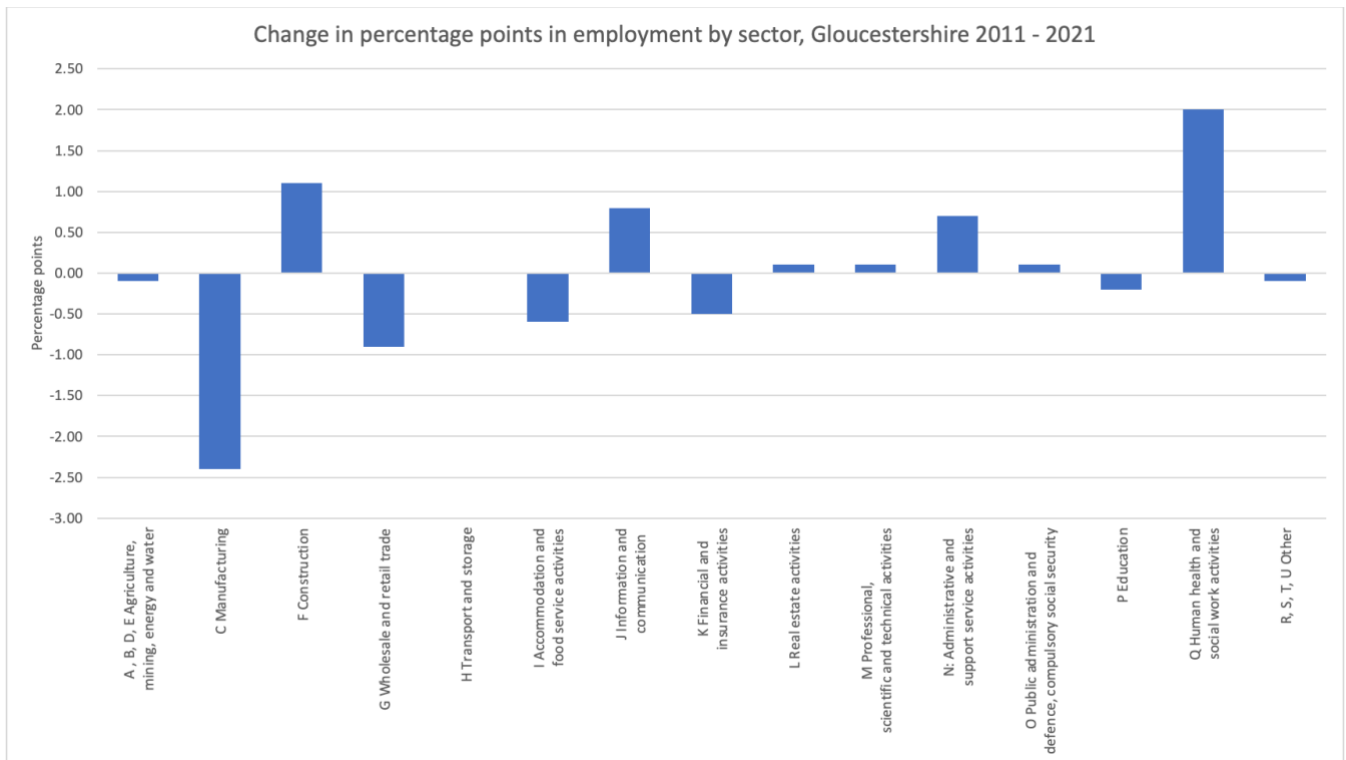
Please note: Water supply includes sewerage, waste management and remediation activities; wholesale and retail trade includes repair of motor vehicles and motor cycles.



Industry comparisons between the 2011 and 2021 Census in Gloucestershire

The below graph shows that since 2011, the manufacturing sector has seen the largest percentage point decrease in employment, with the proportion of people in Gloucestershire employed in this sector falling from 11.2% in 2011 to 8.8% in 2021. This resulted in manufacturing moving from the third largest sector in the county in 2011 to the fourth largest sector in 2021, behind education. This sector also saw the largest decline at a national and regional level and across all districts in the county, although it is worth noting the decline observed at a county and district level was greater than that seen across the South West and England and Wales.

The human health and social work activities sector saw the largest growth in employment between 2011 and 2021, with this sector accounting for 12.1% of Gloucestershire’s employment in 2011 and 14.1% in 2021. This growth was also reflected at a national, regional and district level.



Census 2021 took place during the coronavirus (COVID-19) pandemic, a period of unparalleled and rapid change; the national lockdown, associated guidance and furlough measures will have affected the labour market topic. Extra guidance was given to help people on furlough answer the census questions about work. However, the ONS are unable to determine how furloughed people followed the guidance.