

This bulletin includes;

- latest Claimant Count information
- total job posting numbers
- job posting numbers by occupation

This update also includes a section on occupations from the 2021 Census, showing what people aged 16 years and over and in employment do as their main job.



Jobs and Economic Bulletin

January 2023

Jute Blackmon
jute.blackmon@gfirstlep.com



January 2023

Please find the **January** update below, which includes the latest **Claimant Count** information, total **Job Posting** numbers and job posting numbers by **occupation**. This update also includes a section on occupations from the 2021 Census, showing what people aged 16 years and over and in employment do as their main job.

Executive summary

- The **Claimant Count** in Gloucestershire **increased** by **70 persons** to **8,740** and the rate was **2.2%**
- **Job posting numbers** for the month of **January** were around **24,888** which is a monthly **increase** of around **4,014** job postings when compared to the revised December figure of 20,874.
- Figures from the **2021 Census** show that In Gloucestershire, 19.7% of all usual residents aged 16 years and over in employment were employed in professional occupations, making it the largest broad occupation category. In addition, 13.1% of people were employed in associate professional and technical occupations and 13.8% as managers, directors and senior officials. This means that almost half of people in employment in Gloucestershire (46.5%) were employed in managerial, professional or associate professional occupations, this broadly reflects the situation at a national level.

January Claimant Count

Note: the reference period for these Claimant Count figures is 12th January 2023.

This month saw the publication of the January ***Claimant Count** figures: the **Gloucestershire** rate has **remained** at **2.2%** (the value is expressed as a proportion of residents aged 16-64). The January total now stands at **8,740** compared to the December figure of 8,670 which is a monthly **increase of 70 persons**. All districts saw an increase in the estimated number of unemployed claimants, except Gloucester which saw a decrease, and Stroud which remained the same.

The January figure for the **South West** was **2.5%**, **England** was **3.7%** and the **UK** figure was **3.6%**.

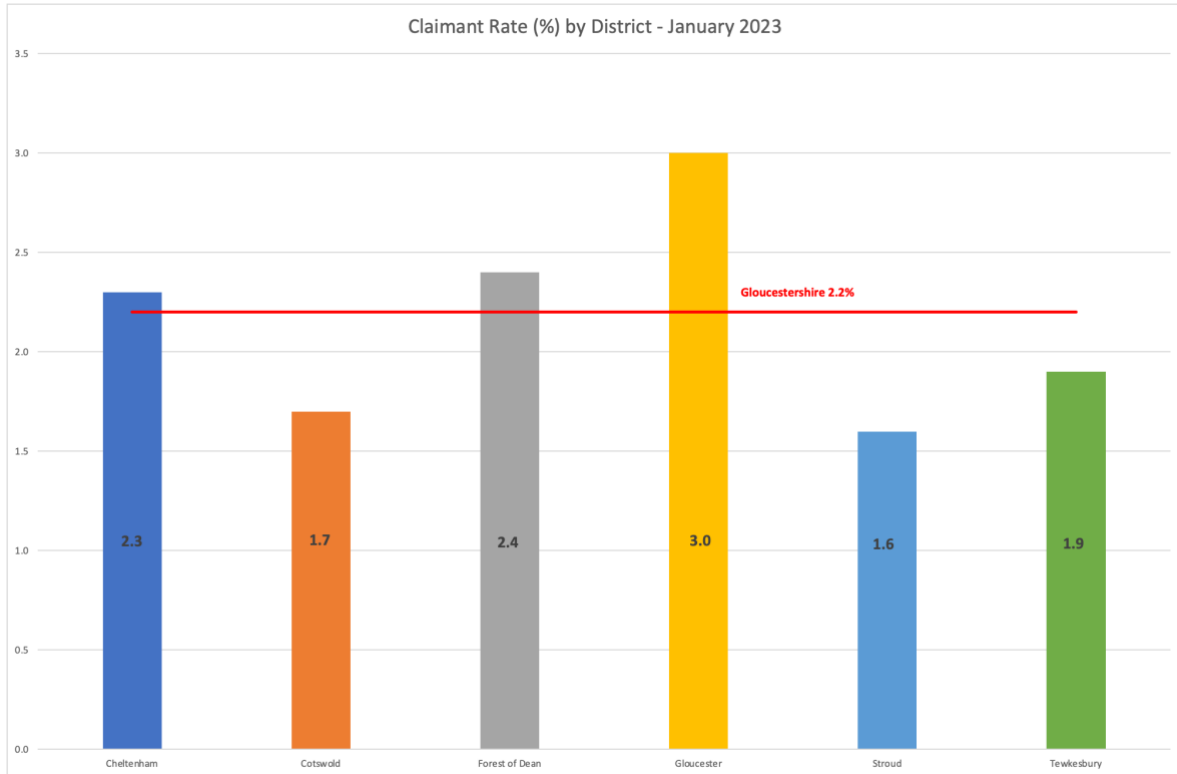
For reference, prior to the pandemic in February 2020, the Gloucestershire rate was 2.0% with 7,895 people claiming, peaking in August 2020 to 5.0% and 19,155 people claiming.

For more information on the claimant count, please refer to the Gloucestershire County Council's monthly publications [here](#).

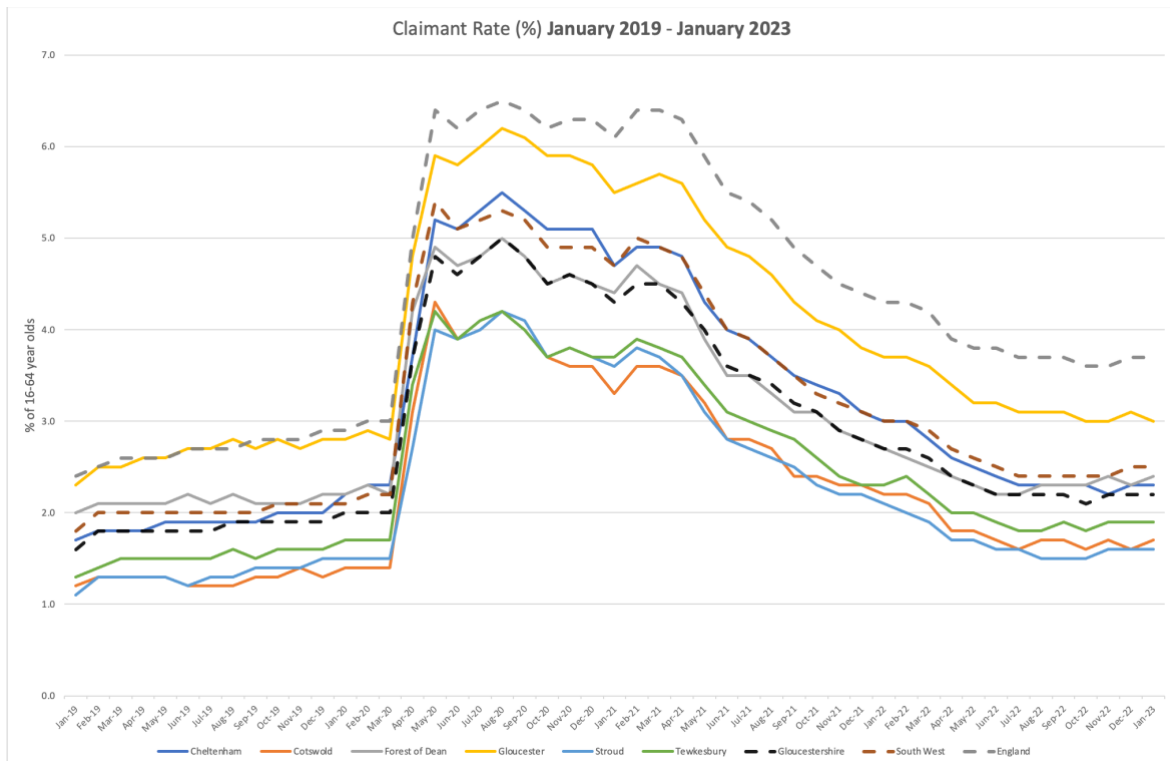
**The Claimant Count is a measure of the number of people who are unemployed and claiming benefits. For more information about Universal Credit please see the [ONS website](#).*



The below shows the claimant rate for January 2023 in Gloucestershire.



The below shows the current claimant rate for Gloucestershire at 2.2%, compared with all six districts, the South West and England from January 2019 to January 2023. The rate for Gloucestershire continues to be below that of England and the South West.

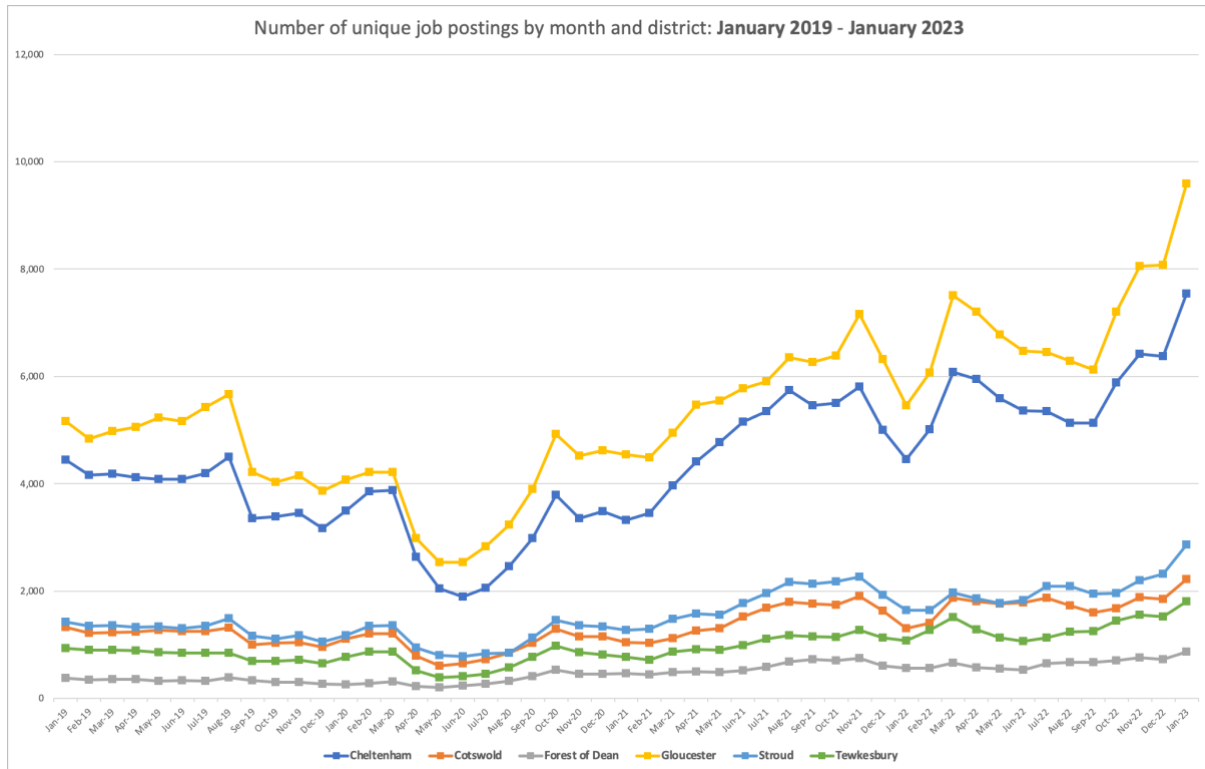




Job posting numbers

Job posting numbers for the month of **January 2023** were around **24,888** which is a monthly **increase** of around **4,014** job postings, when compared to the revised December 2022 figure of 20,874.

The below shows total jobs posted by district from **January 2019 to January 2023**. All districts have seen an increase in numbers when compared to December 2022, with Cheltenham and Gloucester seeing the largest increase.

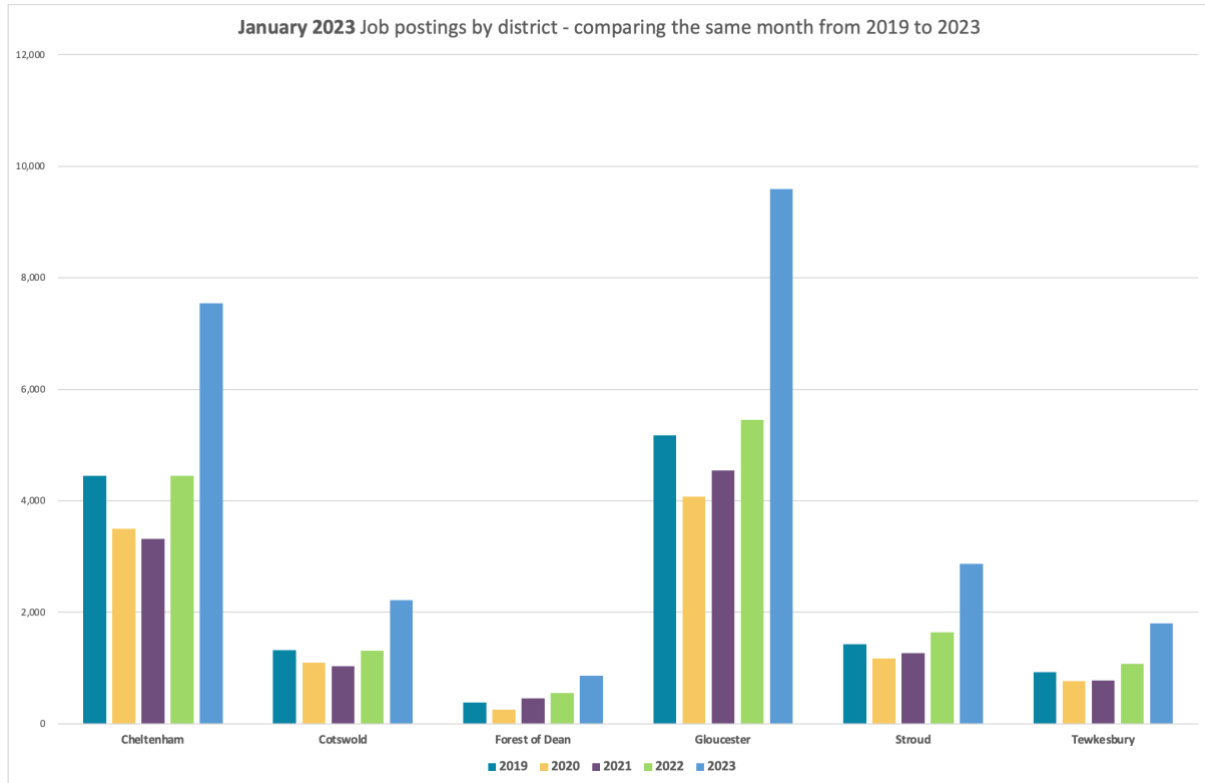


Source: Lightcast™. 2023



Job posting numbers – district comparison

The below gives a district overview of total job postings for the month of January 2023, comparing the same month in 2019, 2020, 2021 and 2022. Job posting numbers in January 2023 (light blue bar) are higher than January in previous years, with the biggest increase seen in Cheltenham and Gloucester.



Source: Lightcast™. 2023

Please note – job posting numbers are based on snapshot data taken on the 20th February, numbers are provisional and subject to change. Job postings are collected from online sources, it doesn't capture postings that are not advertised online, this might result in undercounting for some occupations. This data shows any active posting rather than newly listed postings. A posting is removed from the count after it has been online for 61 days. A job posting does not necessarily result in a job and some jobs will be created without a job posting.



Occupations

The table below shows changes in the number of postings by broad occupation, comparing pre-pandemic February 2020 numbers with January 2021, January 2022, and January 2023.

The trend displayed (chart on the right) is for the 4-year period January 2019 to January 2023. Cells highlighted green show the occupations that have seen an increase when compared to pre-pandemic February 2020.

All occupations saw an increase in January 2023 compared with pre-pandemic February 2020 numbers. The green bars in the trend chart show the peak in postings for that occupation and red bars highlighting the lowest number of postings for the period January 2019 to January 2023.

The trend shows that all occupations have peaked in January 2023. Some of the biggest increases when comparing February 2020 and January 2023 can be seen in the **Elementary Occupations** – examples of some occupations that fall under this category are **agricultural, construction, process plant occupations, goods storage, administration, personal services, cleaning, security, and sales occupations.**

Vancancies by broad occupation	Feb 2020 Unique Postings	Jan 2021 Unique Postings	Jan 2022 Unique Postings	Jan 2023 Unique Postings	% change Feb 2020 - Jan 2023	Trend between January 2019 - January 2023
Managers, Directors and Senior Officials	878	883	1,054	1,726	97%	
Professional Occupations	3,322	3,579	3,802	5,519	66%	
Associate Professional and Technical Occupations	2,046	1,995	2,363	3,962	94%	
Administrative and Secretarial Occupations	1,101	1,008	1,450	2,635	139%	
Skilled Trades Occupations	1,024	800	1,097	1,887	84%	
Caring, Leisure and Other Service Occupations	992	1,088	1,541	2,881	190%	
Sales and Customer Service Occupations	1,108	839	1,237	2,203	99%	
Process, Plant and Machine Operatives	580	509	729	1,326	129%	
Elementary Occupations	716	682	1,216	2,744	283%	
Total Across All Occupations	11,770	11,405	14,496	24,888	111%	

Source: Lightcast™. 2023

Occupation data can be viewed at a high level (as shown in the above table), which uses broad category one-digit Standard Occupation Classification (SOC) codes to group similar jobs together, or at a granular level, using four-digit Standard Occupation Classification (SOC) codes. These four-digit Standard Occupation Classification (SOC) codes provide more detailed descriptions and have been used in the table below.

The below lists the **top ten occupations by four-digit SOC code for January 2023**, alongside total jobs advertised and what proportion this was as a percentage of the total jobs posted in Gloucestershire for this month. **Care Workers and Home Carers** accounted for **5.4%** of the overall jobs posted in Gloucestershire in January 2023, followed by **Other Administrative Occupations n.e.c. 3.8%** and **Sales Related Occupations n.e.c. 3.1%**, with the remaining occupations accounting for smaller numbers.



Top ten Occupations by four-digit SOC code	Jan 2023 Unique Postings	As a percentage of jobs posted
Care Workers and Home Carers	1,339	5.4%
Other Administrative Occupations n.e.c.	952	3.8%
Sales Related Occupations n.e.c.	761	3.1%
Nurses	679	2.7%
Programmers and Software Development Professionals	652	2.6%
Customer Service Occupations n.e.c.	631	2.5%
Kitchen and Catering Assistants	586	2.4%
Elementary Storage Occupations	485	1.9%
Cleaners and Domestic	456	1.8%
Nursing Auxiliaries and Assistants	419	1.7%

Source: Lightcast™. 2023

Please note: **n.e.c.** stands for **not elsewhere classified** – for a classification that cannot fit into any other grouping

Top companies posting

The top ten companies posting jobs in Gloucestershire in January 2023 were:

- NHS
- Gloucestershire County Council
- Ultra Group Company Limited
- Northrop Grumman
- Safran
- General Electric
- Amazon
- The Orders of St John Care Trust
- Barchester Plc
- Whitbread

Please note this does not include employment agencies, however employment agencies do form part of the total jobs posted in the report.



Occupations – from the 2021 Census

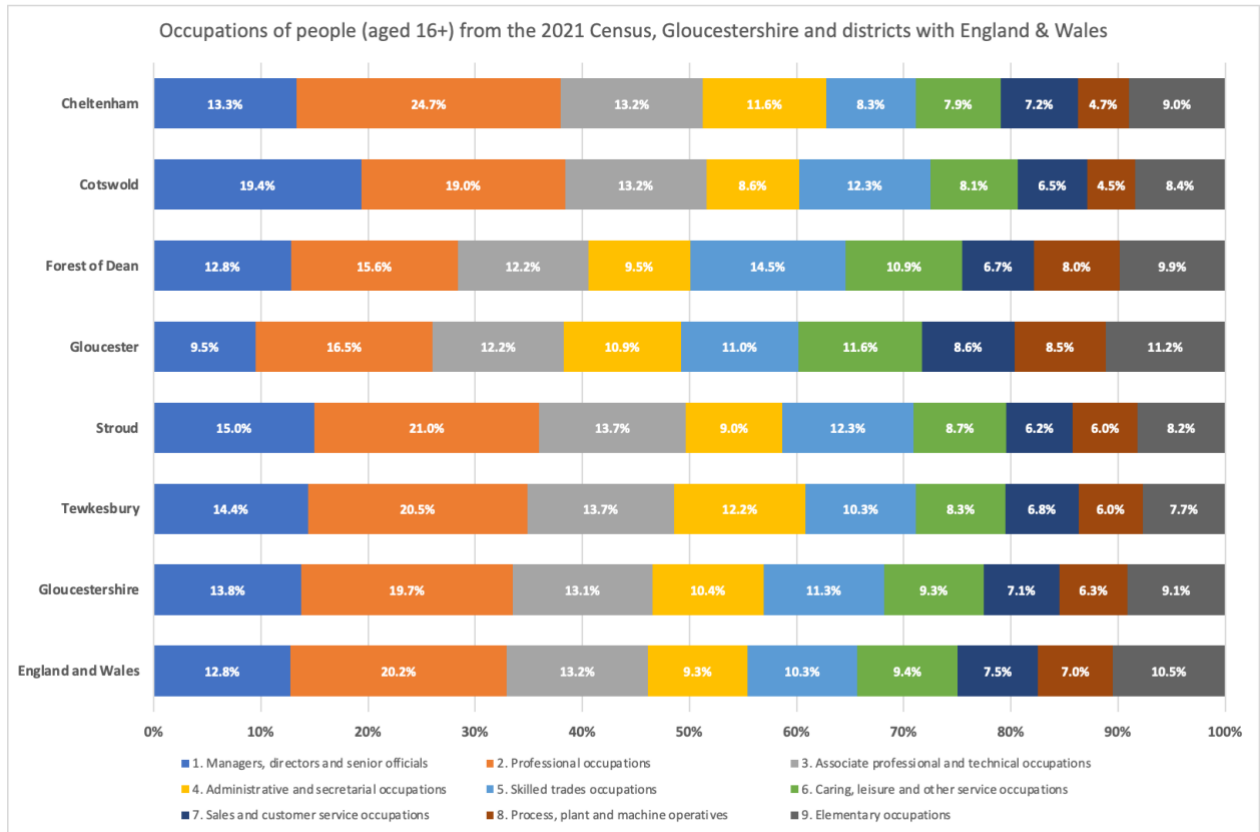
The below gives a district overview of occupations data from the 2021 Census for Gloucestershire and its districts and England and Wales, showing what people aged 16 years and over in employment do as their main job. Their job title or details of activities they do in their job and any supervisory or management responsibilities form this classification. This information is used to code responses to an occupation using the Standard Occupational Classification (SOC) 2020.

More information on the 2021 Census labour market and travel to work theme can be found on the Gloucestershire County Council website [here](#). Further analysis on the 2021 Census topics can also be found on the Gloucestershire County Council website [here](#).

In **Gloucestershire**, 19.7% of all usual residents aged 16 years and over in employment were employed in professional occupations, making it the largest broad occupation category. In addition, 13.1% of people were employed in associate professional and technical occupations and 13.8% as managers, directors and senior officials. This means that almost half of people in employment in Gloucestershire (46.5%) were employed in managerial, professional or associate professional occupations, this broadly reflects the situation at a national level.

At the other end of the scale, Gloucestershire had slightly lower proportions of people with low skills (sales and customer service occupation; process, plant and machine operatives and elementary occupations) than nationally.

- **Cheltenham** has a much higher proportion of professional occupations than elsewhere, with this group accounting for 24.7% of employment in the district, this compares to 19.7% in Gloucestershire and 20.2% nationally.
- **Cotswold** has a much higher proportion of managers, directors and senior officials than elsewhere, with this group accounting for 19.4% of employment in the district, this compares to 13.8% in Gloucestershire and 12.8% nationally.
- In the **Forest of Dean** the proportion of people employed in skilled trades occupations is higher than the county and national average, with 14.5% of people employed in this occupation in the Forest of Dean compared to 11.3% in Gloucestershire and 10.3% in England and Wales.
- **Gloucester** has higher proportion of people employed in caring, leisure and other service occupations, administrative and secretarial occupations, process plant and machine operatives and sales and customer service occupations than Gloucestershire and England and Wales.
- In **Stroud** the proportion of people employed as managers, directors and senior officials exceeded the county and national average, with the 15.0% of people employed in this occupation compared to 13.8% in Gloucestershire and 12.8% in England.
- **Tewkesbury** has a higher proportion of people employed in administrative and secretarial occupations, with this group accounting for 12.2% of employment, this compares to 10.4% in Gloucestershire and 9.3% in England and Wales.



Please note: Census 2021 took place during the coronavirus (COVID-19) pandemic, a period of unparalleled and rapid change; the national lockdown, associated guidance and furlough measures will have affected the labour market topic. Extra guidance was given to help people on furlough answer the census questions about work. However, the ONS are unable to determine how furloughed people followed the guidance.